

*For Lease*

# WESTPORT PLAZA

8035 WEST AIRPORT , HOUSTON, TX 77071

**SILVESTRI**  
— INVESTMENTS —



## OFFERING SUMMARY

**Lease Rate:** Call For Rates

**Lot Size:** 4.56 Acres

**Building Size:** 26,658 SF

**Market:** Southwest Houston

## PROPERTY OVERVIEW

The Westport Plaza is located between Gessner Road and Fondren. This center is surrounded by Residential Communities and Apartment complexes. With easy access to Beltway 8 and Hwy-90

## PROPERTY HIGHLIGHTS

- High Visibility from west airport
- Easy access to center
- Ample Parking

## FOR INFORMATION CALL

P:713.785.6272 or Email  
Frontdesk@silvestriusa.com

**Silvestri Investments**  
1215 Gessner Road,  
Houston, Texas 77055  
Silvestriusa.com

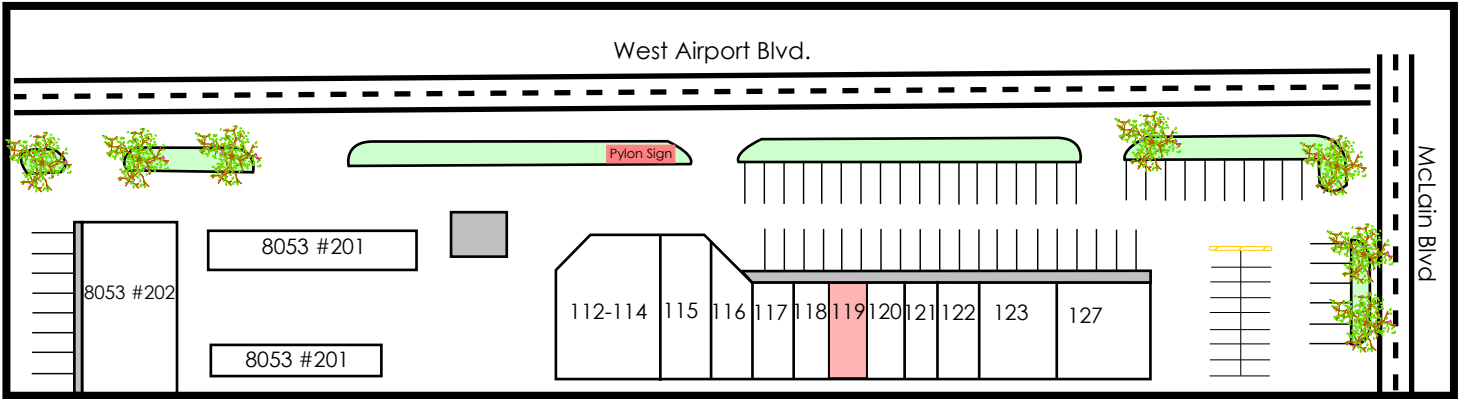
The information was obtained from sources deemed reliable; however, Silvestri Investments Inc. has not verified it and makes no guarantees, warranties or representations as to the completeness or accuracy thereof. The presentation of this real estate information is subject to errors; omissions; change of price; prior sale or lease, or withdrawal without notice. You and your advisors should conduct a careful independent investigation of the property to determine if it is suitable for your intended purpose.

For Lease

# WESTPORT PLAZA

8035 WEST AIRPORT , HOUSTON, TX 77071

SILVESTRI  
— INVESTMENTS —



#### CURRENT TENANTS

112-114	Discount Ventures	3,658 SF
115	Cool Runnings Jamaican Grill	1,820 SF
116	Costa Azul Meat Market	1,200 SF
117	Beauty City Hair Salon	1,000 SF
118	La's Mona Hair Salon	1,000 SF
119	AVAILABLE	1,000 SF
120	Bel Griffin Pharmacy	1,000 SF
121	Westbury Nails	1,200 SF
123	All Christians Practical	1,700 SF
127	Amusement Facility	3,250 SF
8053-#201	Wash Brite	4,100 SF
8053-#202	Prince & Princess Daycare	4,930 SF

#### FOR INFORMATION CALL

P:713.785.6272 or Email  
Frontdesk@silvestriusa.com

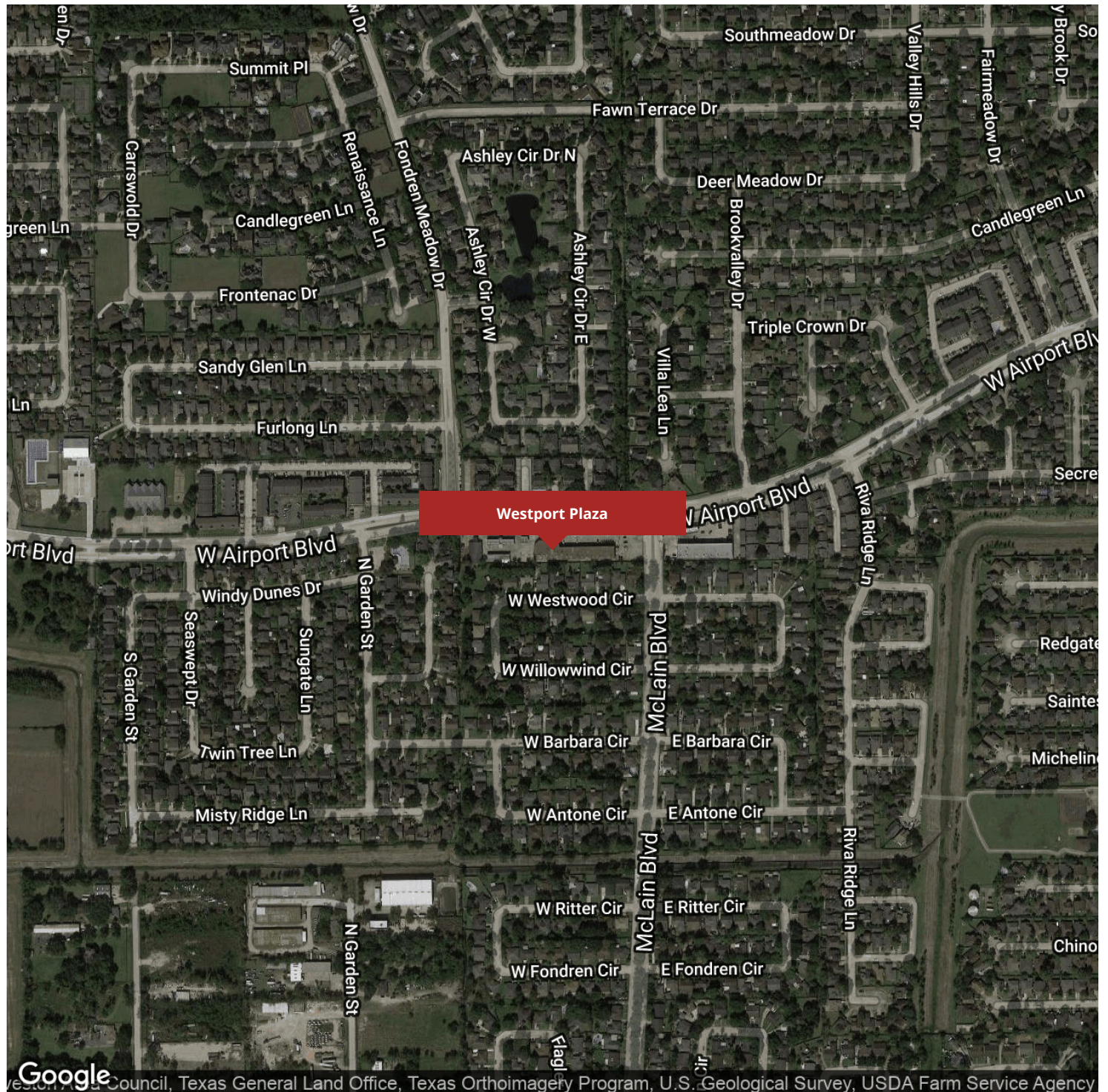
Silvestri Investments  
1215 Gessner Road,  
Houston, Texas 77055  
Silvestriusa.com

*For Lease*

# WESTPORT PLAZA

8035 WEST AIRPORT, HOUSTON, TX 77071

**SILVESTRI**  
— INVESTMENTS —



## FOR INFORMATION CALL

P: 713.785.6272 or Email  
Frontdesk@silvestriusa.com

## Silvestri Investments

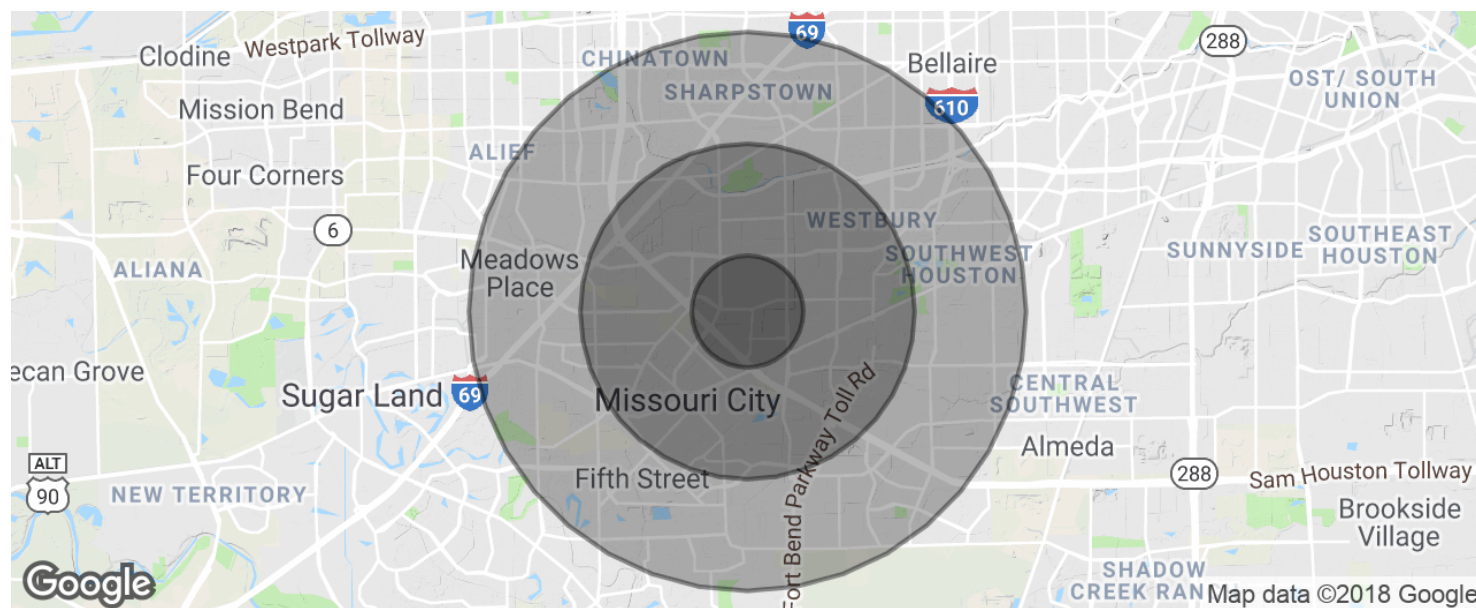
1215 Gessner Road,  
Houston, Texas 77055  
Silvestriusa.com

For Lease

# WESTPORT PLAZA

8035 WEST AIRPORT , HOUSTON, TX 77071

SILVESTRI  
— INVESTMENTS —



POPULATION	1 MILE	3 MILES	5 MILES
Total population	18,447	138,058	389,416
Median age	33.4	32.7	32.9
Median age (Male)	32.7	30.5	30.9
Median age (Female)	33.9	34.5	34.6
HOUSEHOLDS & INCOME	1 MILE	3 MILES	5 MILES
Total households	5,948	48,109	133,605
# of persons per HH	3.1	2.9	2.9
Average HH income	\$63,578	\$56,157	\$58,739
Average house value		\$142,207	\$166,957

\* Demographic data derived from 2010 US Census

## FOR INFORMATION CALL

P:713.785.6272 or Email  
Frontdesk@silvestriusa.com

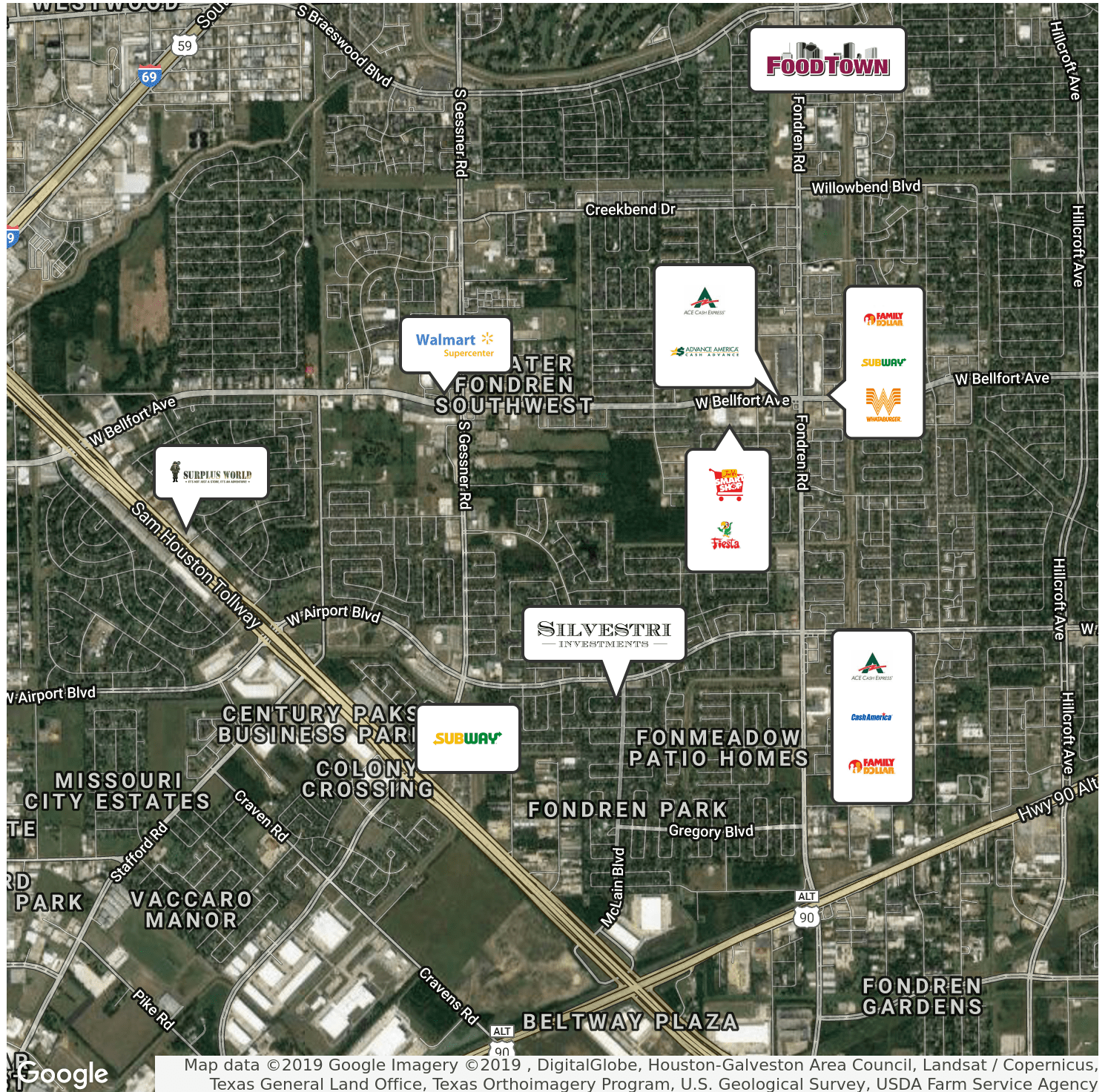
Silvestri Investments  
1215 Gessner Road,  
Houston, Texas 77055  
Silvestriusa.com

For Lease

# WESTPORT PLAZA

8035 WEST AIRPORT, HOUSTON, TX 77071

SILVESTRI  
— INVESTMENTS —



## FOR INFORMATION CALL

P: 713.785.6272 or Email  
Frontdesk@silvestriusa.com

Silvestri Investments  
1215 Gessner Road,  
Houston, Texas 77055  
Silvestriusa.com