

For Sale

FM 2100 & SOUTH DIAMONDHEAD

0 FM 2100 , Crosby, TX 77532

SILVESTRI
— INVESTMENTS —



OFFERING SUMMARY

Sale Price: Call For Pricing

Lot Size: 2.75 Acres

Market: Crosby

PROPERTY OVERVIEW

This 2.75 acres land parcel is located in the growing community of Crosby, Texas. This Tract of land has dual access from S. Diamondhead Blvd and Fm 2100 with close proximity to the Master-plan Newport Community with over 1500+ homes built.

PROPERTY HIGHLIGHTS

- Cross Access with Service Station
- Approximately 100' of frontage on FM 2100
- New Residential in Surrounding Area
- High Traffic Counts

FOR INFORMATION CALL

P:713.785.6272 or Email
Frontdesk@silvestriusa.com

Silvestri Investments
1215 Gessner Road,
Houston, Texas 77055
Silvestriusa.com

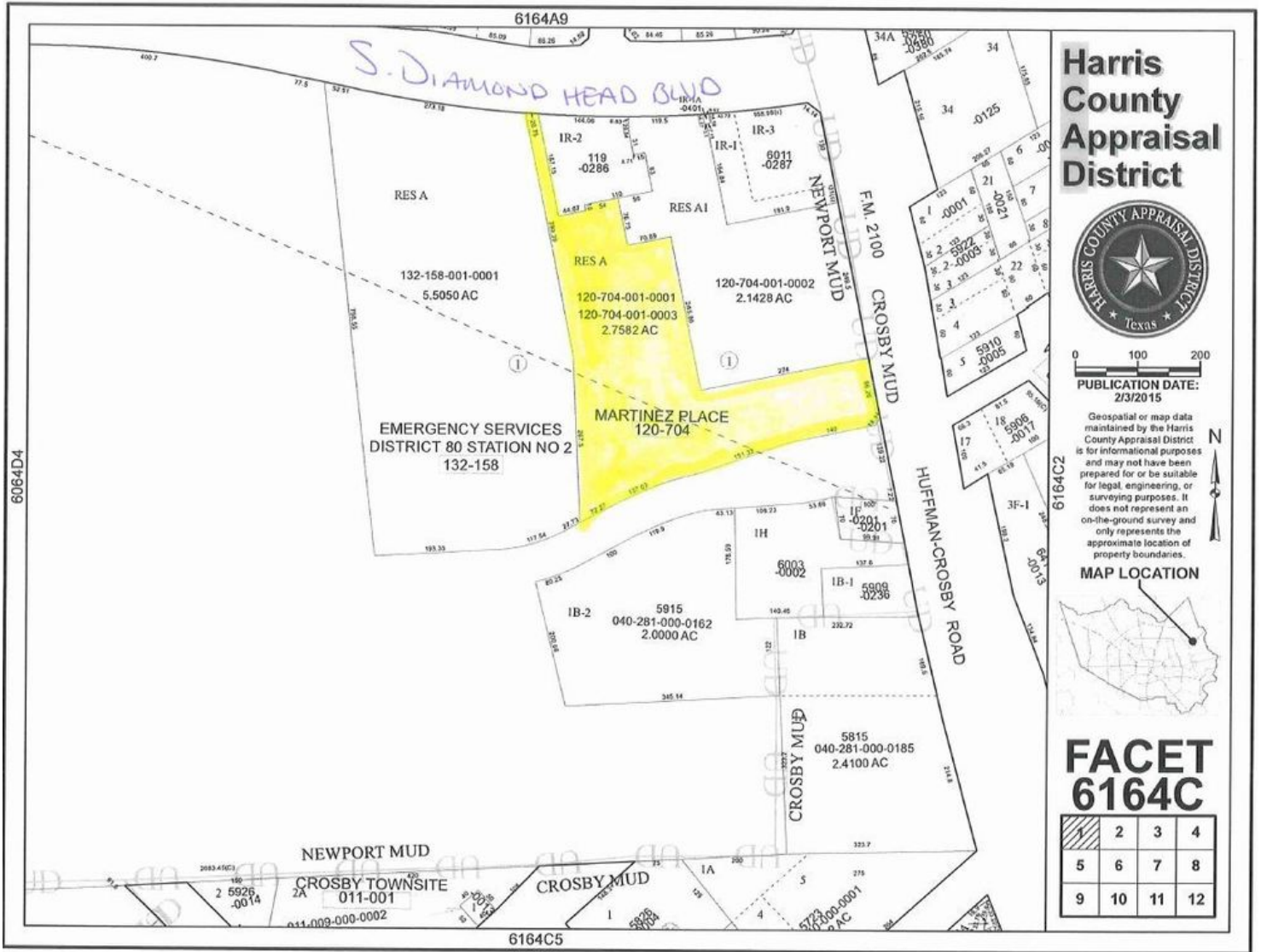
The information was obtained from sources deemed reliable; however, Silvestri Investments Inc. has not verified it and makes no guarantees, warranties or representations as to the completeness or accuracy thereof. The presentation of this real estate information is subject to errors; omissions; change of price; prior sale or lease, or withdrawal without notice. You and your advisors should conduct a careful independent investigation of the property to determine if it is suitable for your intended purpose.

For Sale

FM 2100 & SOUTH DIAMONDHEAD

0 FM 2100 , CROSBY, TX 77532

SILVESTRI
— INVESTMENTS —



FOR INFORMATION CALL

P: 713.785.6272 or Email
Frontdesk@silvestriusa.com

Silvestri Investments
1215 Gessner Road,
Houston, Texas 77055
Silvestriusa.com

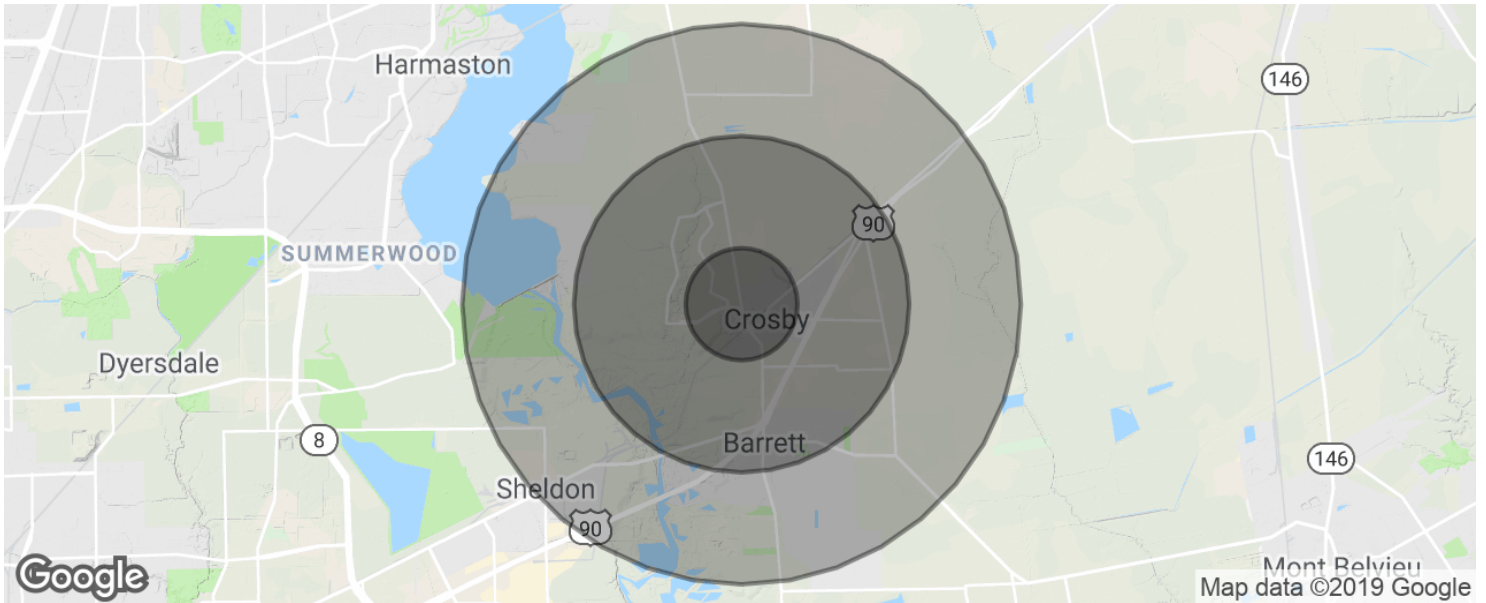
The information was obtained from sources deemed reliable; however, Silvestri Investments Inc. has not verified it and makes no guarantees, warranties or representations as to the completeness or accuracy thereof. The presentation of this real estate information is subject to errors; omissions; change of price; prior sale or lease, or withdrawal without notice. You and your advisors should conduct a careful independent investigation of the property to determine if it is suitable for your intended purpose.

For Sale

FM 2100 & SOUTH DIAMONDHEAD

0 FM 2100 , CROSBY, TX 77532

SILVESTRI
— INVESTMENTS —



POPULATION

	1 MILE	3 MILES	5 MILES
Total population	1,444	10,001	23,765
Median age	37.3	36.8	36.0
Median age (Male)	37.2	36.8	35.6
Median age (Female)	37.5	36.9	36.5

HOUSEHOLDS & INCOME

	1 MILE	3 MILES	5 MILES
Total households	517	3,552	8,287
# of persons per HH	2.8	2.8	2.9
Average HH income	\$88,060	\$79,859	\$73,535
Average house value	\$135,018	\$131,548	\$130,772

* Demographic data derived from 2010 US Census

FOR INFORMATION CALL

P:713.785.6272 or Email
Frontdesk@silvestriusa.com

Silvestri Investments
1215 Gessner Road,
Houston, Texas 77055
Silvestriusa.com

The information was obtained from sources deemed reliable; however, Silvestri Investments Inc. has not verified it and makes no guarantees, warranties or representations as to the completeness or accuracy thereof. The presentation of this real estate information is subject to errors; omissions; change of price; prior sale or lease, or withdrawal without notice. You and your advisors should conduct a careful independent investigation of the property to determine if it is suitable for your intended purpose.