

For Sale

# CROSBY HUFFMAN 9 ACRES

0 FM 2100, CROSBY, TX 77532

SILVESTRI  
— INVESTMENTS —



## OFFERING SUMMARY

Sale Price: Call For Pricing

Lot Size: 9.0 Acres

Market: Crosby

## PROPERTY OVERVIEW

This 9 acre land parcel is located off of FM 2100 in the middle of the Newport Community. It has excellent frontage from FM 2100 and is close proximity to the other retailers south of the subject area.

## PROPERTY HIGHLIGHTS

- Great Visibility from FM 2100
- Close proximity to Newport Community
- Undeveloped Land

## FOR INFORMATION CALL

P:713.785.6272 or Email  
Frontdesk@silvestriusa.com

Silvestri Investments  
1215 Gessner Road,  
Houston, Texas 77055  
Silvestriusa.com

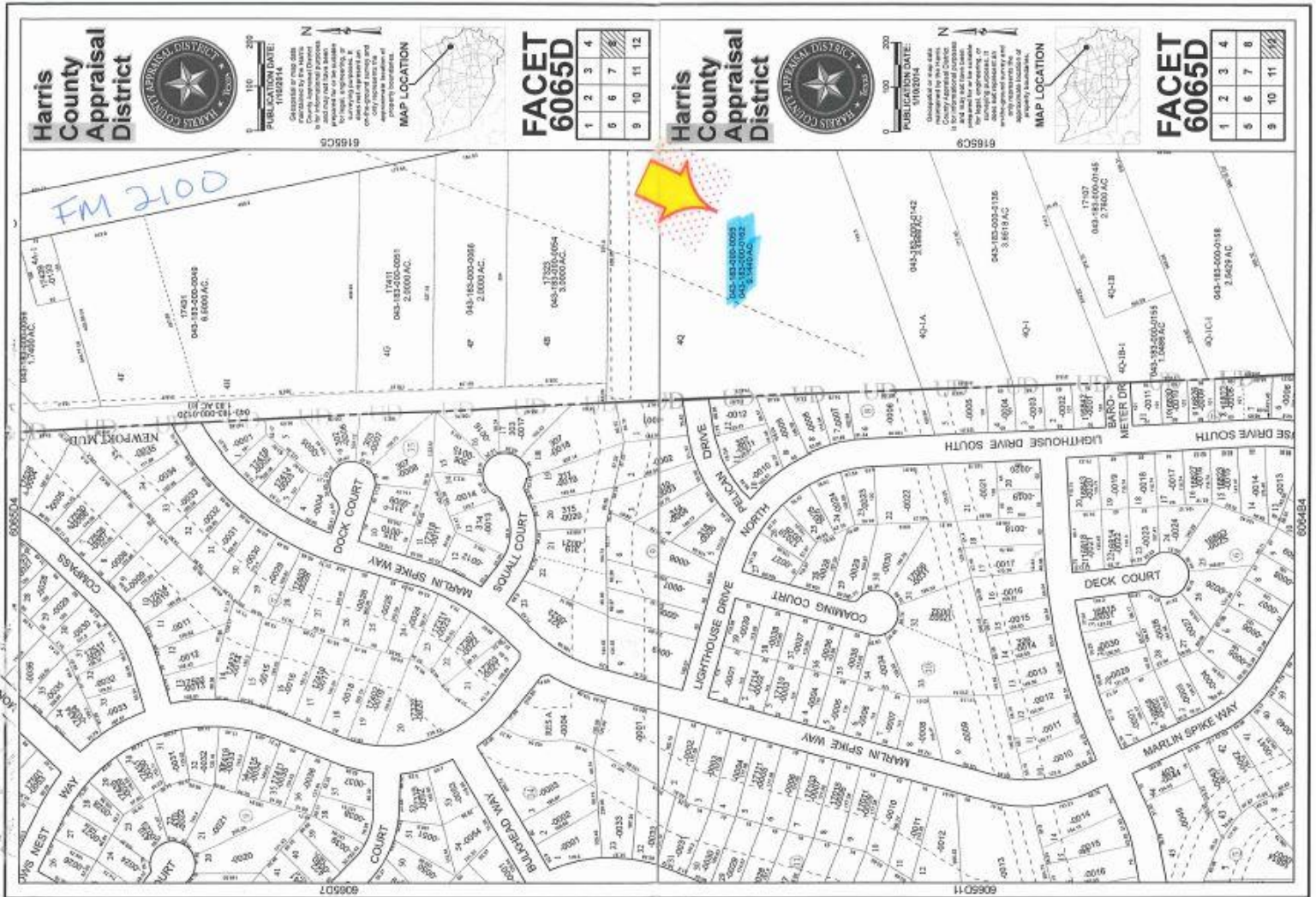
The information was obtained from sources deemed reliable; however, Silvestri Investments Inc. has not verified it and makes no guarantees, warranties or representations as to the completeness or accuracy thereof. The presentation of this real estate information is subject to errors; omissions; change of price; prior sale or lease, or withdrawal without notice. You and your advisors should conduct a careful independent investigation of the property to determine if it is suitable for your intended purpose.

For Sale

# CROSBY HUFFMAN 9 ACRES

0 FM 2100, CROSBY, TX 77532

SILVESTRI  
— INVESTMENTS —



**FOR INFORMATION CALL**

P: 713.785.6272 or Email  
Frontdesk@silvestriusa.com

**Silvestri Investments**  
1215 Gessner Road,  
Houston, Texas 77055  
Silvestriusa.com

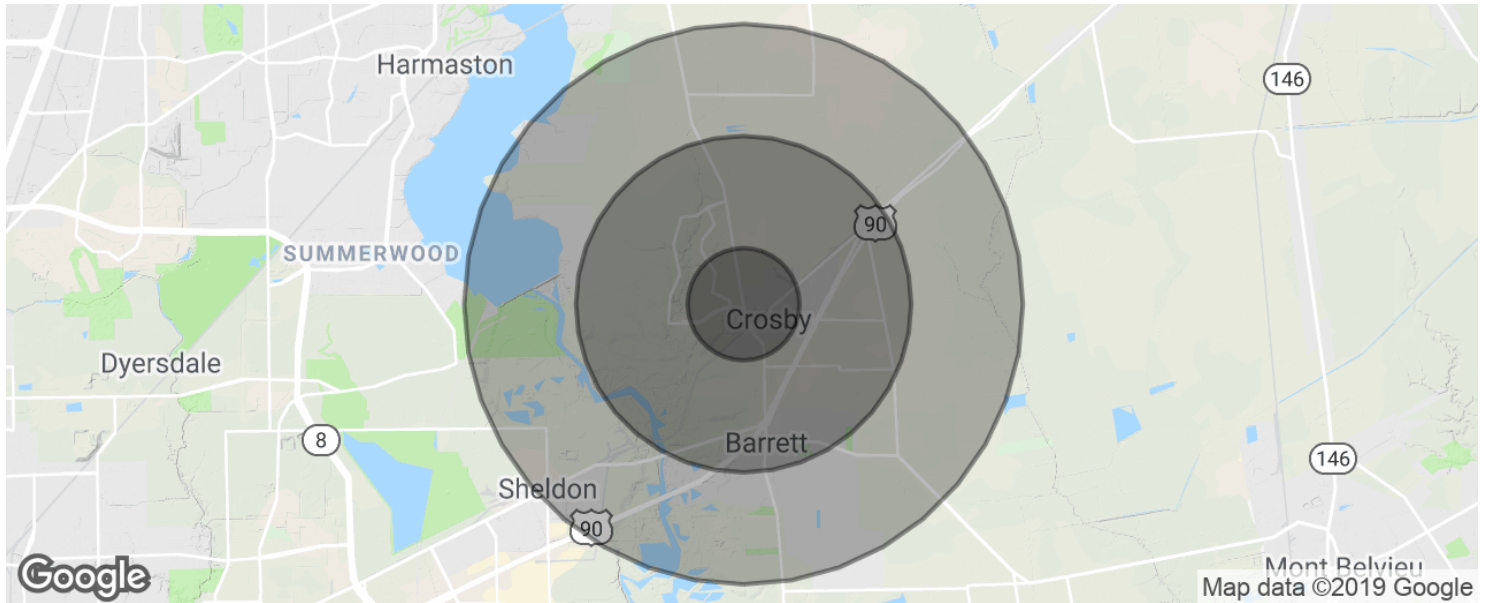
The information was obtained from sources deemed reliable; however, Silvestri Investments Inc. has not verified it and makes no guarantees, warranties or representations as to the completeness or accuracy thereof. The presentation of this real estate information is subject to errors; omissions; change of price; prior sale or lease, or withdrawal without notice. You and your advisors should conduct a careful independent investigation of the property to determine if it is suitable for your intended purpose.

For Sale

# CROSBY HUFFMAN 9 ACRES

0 FM 2100, CROSBY, TX 77532

SILVESTRI  
— INVESTMENTS —



## POPULATION

	1 MILE	3 MILES	5 MILES
Total population	1,444	10,001	23,765
Median age	37.3	36.8	36.0
Median age (Male)	37.2	36.8	35.6
Median age (Female)	37.5	36.9	36.5

## HOUSEHOLDS & INCOME

	1 MILE	3 MILES	5 MILES
Total households	517	3,552	8,287
# of persons per HH	2.8	2.8	2.9
Average HH income	\$88,060	\$79,859	\$73,535
Average house value	\$135,018	\$131,548	\$130,772

\* Demographic data derived from 2010 US Census

## FOR INFORMATION CALL

P:713.785.6272 or Email  
Frontdesk@silvestriusa.com

Silvestri Investments  
1215 Gessner Road,  
Houston, Texas 77055  
Silvestriusa.com

The information was obtained from sources deemed reliable; however, Silvestri Investments Inc. has not verified it and makes no guarantees, warranties or representations as to the completeness or accuracy thereof. The presentation of this real estate information is subject to errors; omissions; change of price; prior sale or lease, or withdrawal without notice. You and your advisors should conduct a careful independent investigation of the property to determine if it is suitable for your intended purpose.