

For Sale

# COCOA LAND

SR 528 & I-95 , COCOA, FL 32926

SILVESTRI  
— INVESTMENTS —



## OFFERING SUMMARY

Sale Price: Call For Pricing

Lot Size: 214 Acres

Market: Cocoa

## PROPERTY OVERVIEW

The Subject property is located in Cocoa, Florida on the South East corner of the SR 528 & I-95 interchange. This land parcel is 214 acres of unrestricted land.

## PROPERTY HIGHLIGHTS

- Surrounded by residential neighborhoods
- Close to local trade markets
- Easy Access from S.R. 528 & I-95

## FOR INFORMATION CALL

P:713.785.6272 or Email  
Frontdesk@silvestriusa.com

Silvestri Investments  
1215 Gessner Road,  
Houston, Texas 77055  
Silvestriusa.com

The information was obtained from sources deemed reliable; however, Silvestri Investments Inc. has not verified it and makes no guarantees, warranties or representations as to the completeness or accuracy thereof. The presentation of this real estate information is subject to errors; omissions; change of price; prior sale or lease, or withdrawal without notice. You and your advisors should conduct a careful independent investigation of the property to determine if it is suitable for your intended purpose.

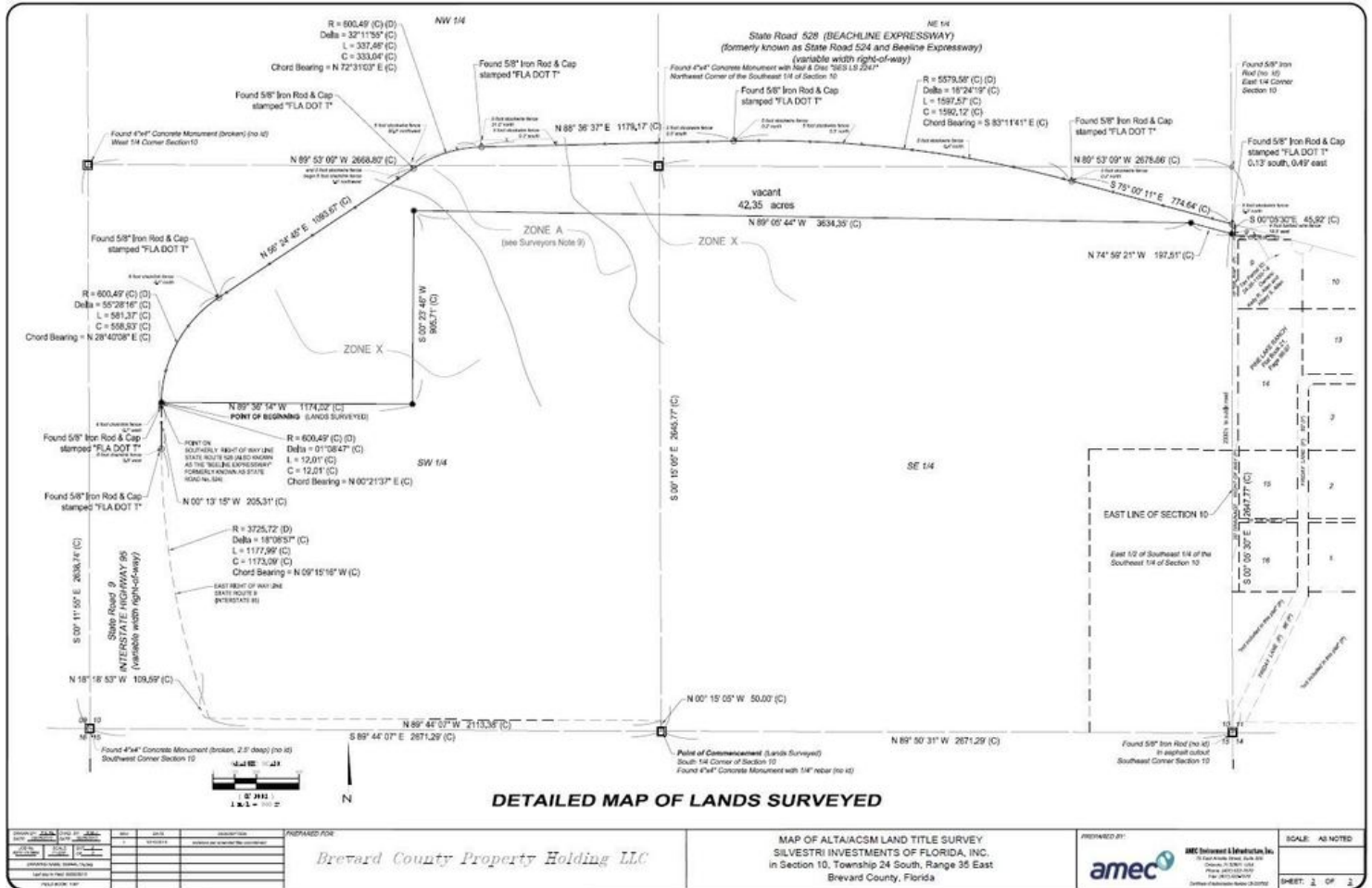
For Sale

# COCOA LAND

SR 528 & I-95 , COCOA, FL 32926

# SILVESTRI

— INVESTMENTS —



## FOR INFORMATION CALL

P: 713.785.6272 or Email  
Frontdesk@silvestriusa.com

Silvestri Investments  
1215 Gessner Road,  
Houston, Texas 77055  
Silvestriusa.com

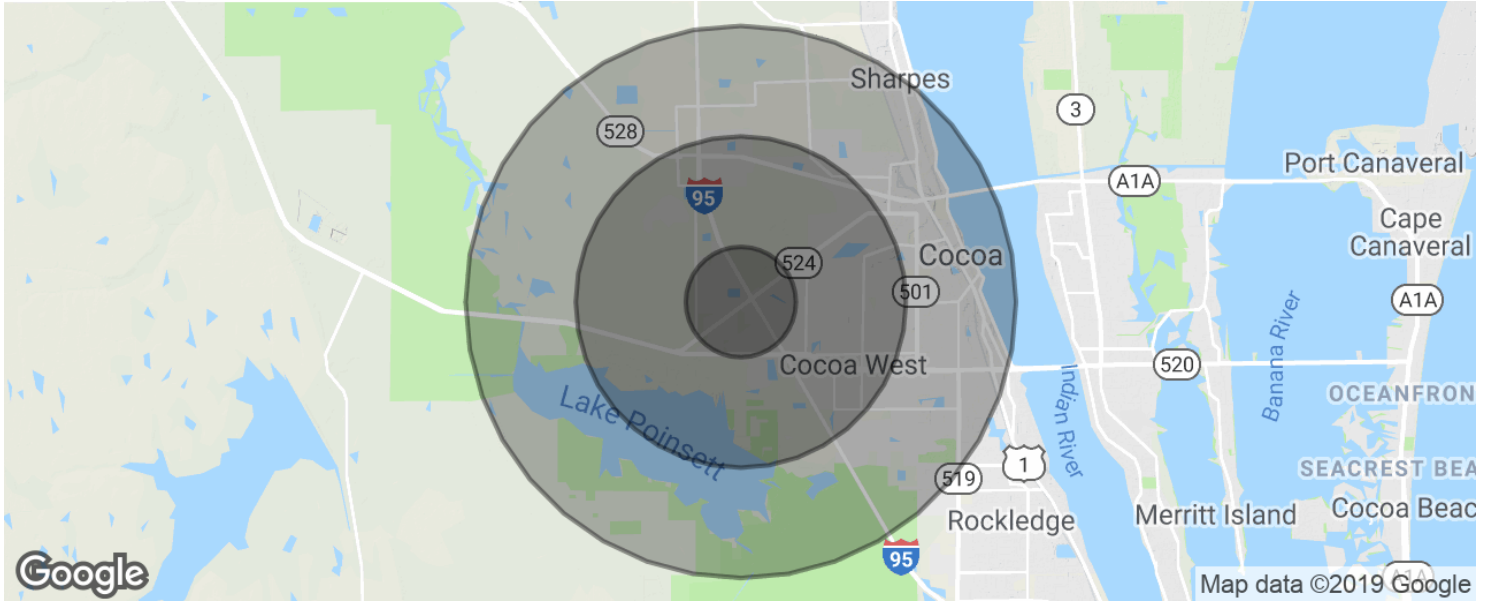
The information was obtained from sources deemed reliable; however, Silvestri Investments Inc. has not verified it and makes no guarantees, warranties or representations as to the completeness or accuracy thereof. The presentation of this real estate information is subject to errors; omissions; change of price; prior sale or lease, or withdrawal without notice. You and your advisors should conduct a careful independent investigation of the property to determine if it is suitable for your intended purpose.

For Sale

# COCOA LAND

SR 528 & I-95 , COCOA, FL 32926

**SILVESTRI**  
— INVESTMENTS —



## POPULATION

	1 MILE	3 MILES	5 MILES
Total population	1,266	15,084	47,299
Median age	40.3	39.4	39.0
Median age (Male)	39.2	38.0	37.2
Median age (Female)	40.9	40.7	40.5

## HOUSEHOLDS & INCOME

	1 MILE	3 MILES	5 MILES
Total households	474	5,795	18,673
# of persons per HH	2.7	2.6	2.5
Average HH income	\$59,168	\$54,673	\$53,156
Average house value	\$214,178	\$181,628	\$182,216

\* Demographic data derived from 2010 US Census

## FOR INFORMATION CALL

P:713.785.6272 or Email  
Frontdesk@silvestriusa.com

**Silvestri Investments**  
1215 Gessner Road,  
Houston, Texas 77055  
Silvestriusa.com

The information was obtained from sources deemed reliable; however, Silvestri Investments Inc. has not verified it and makes no guarantees, warranties or representations as to the completeness or accuracy thereof. The presentation of this real estate information is subject to errors; omissions; change of price; prior sale or lease, or withdrawal without notice. You and your advisors should conduct a careful independent investigation of the property to determine if it is suitable for your intended purpose.