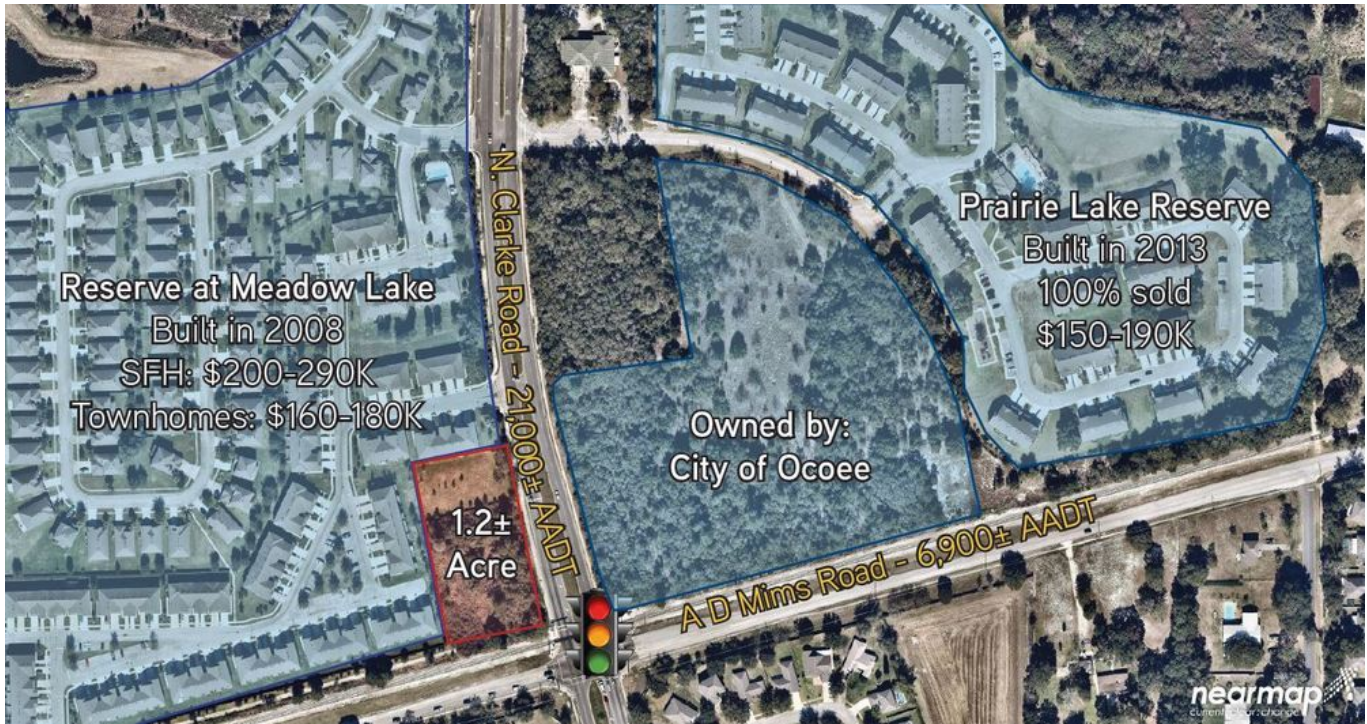


For Sale

OCOEE | NORTH CLARKE

NORTHWEST QUADRANT OF AD MIMS RD. & N. CLARKE RD., OCOEE, FL 34761

SILVESTRI
— INVESTMENTS —



OFFERING SUMMARY

Sale Price: Call For Pricing

Lot Size: 1.2 Acres

Market: Greater Orlando

PROPERTY OVERVIEW

This 1.2-acre property sits in the northwest quadrant of Ad Mims Road and N. Clarke Road, which sees more than 21,000 cars daily. It is surrounded by newly-built subdivisions with approximately 25,381 households within a 3-mile radius.

PROPERTY HIGHLIGHTS

- Heavy Demographics
- Unrestricted Land
- Great visibility from lighted Intersection

FOR INFORMATION CALL

P: 713.785.6272 or Email
Frontdesk@silvestriusa.com

Silvestri Investments
1215 Gessner Road,
Houston, Texas 77055
Silvestriusa.com

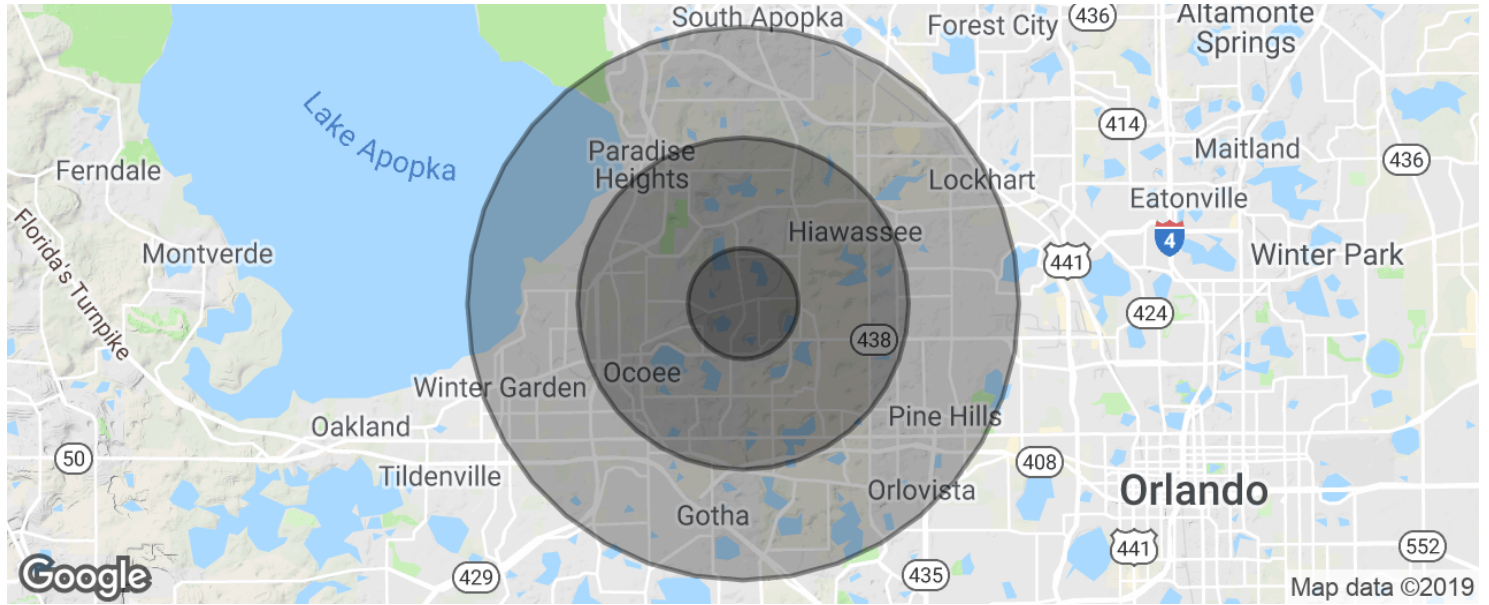
The information was obtained from sources deemed reliable; however, Silvestri Investments Inc. has not verified it and makes no guarantees, warranties or representations as to the completeness or accuracy thereof. The presentation of this real estate information is subject to errors; omissions; change of price; prior sale or lease, or withdrawal without notice. You and your advisors should conduct a careful independent investigation of the property to determine if it is suitable for your intended purpose.

For Sale

OCOEE | NORTH CLARKE

NORTHWEST QUADRANT OF AD MIMS RD. & N. CLARKE RD., OCOEE, FL 34761

SILVESTRI
— INVESTMENTS —



POPULATION	1 MILE	3 MILES	5 MILES
Total population	9,109	72,597	187,246
Median age	34.6	33.7	33.1
Median age (Male)	35.1	33.4	32.7
Median age (Female)	34.1	34.5	33.6
HOUSEHOLDS & INCOME	1 MILE	3 MILES	5 MILES
Total households	3,063	24,193	63,109
# of persons per HH	3.0	3.0	3.0
Average HH income	\$68,861	\$60,792	\$60,046
Average house value	\$243,117	\$209,019	\$228,293

* Demographic data derived from 2010 US Census

FOR INFORMATION CALL

P:713.785.6272 or Email
Frontdesk@silvestriusa.com

Silvestri Investments
1215 Gessner Road,
Houston, Texas 77055
Silvestriusa.com

The information was obtained from sources deemed reliable; however, Silvestri Investments Inc. has not verified it and makes no guarantees, warranties or representations as to the completeness or accuracy thereof. The presentation of this real estate information is subject to errors; omissions; change of price; prior sale or lease, or withdrawal without notice. You and your advisors should conduct a careful independent investigation of the property to determine if it is suitable for your intended purpose.

For Sale

OCOEE | NORTH CLARKE

NORTHWEST QUADRANT OF AD MIMS RD. & N. CLARKE RD., OCOEE, FL 34761

SILVESTRI
— INVESTMENTS —



FOR INFORMATION CALL

P: 713.785.6272 or Email
Frontdesk@silvestriusa.com

Silvestri Investments
1215 Gessner Road,
Houston, Texas 77055
Silvestriusa.com

The information was obtained from sources deemed reliable; however, Silvestri Investments Inc. has not verified it and makes no guarantees, warranties or representations as to the completeness or accuracy thereof. The presentation of this real estate information is subject to errors; omissions; change of price; prior sale or lease, or withdrawal without notice. You and your advisors should conduct a careful independent investigation of the property to determine if it is suitable for your intended purpose.